

// PRODUCT SHEET

Measuring Data

logic

■ Measurement files

■ Limit values

■ Graphical evaluation

■ Evaluation and acceptance

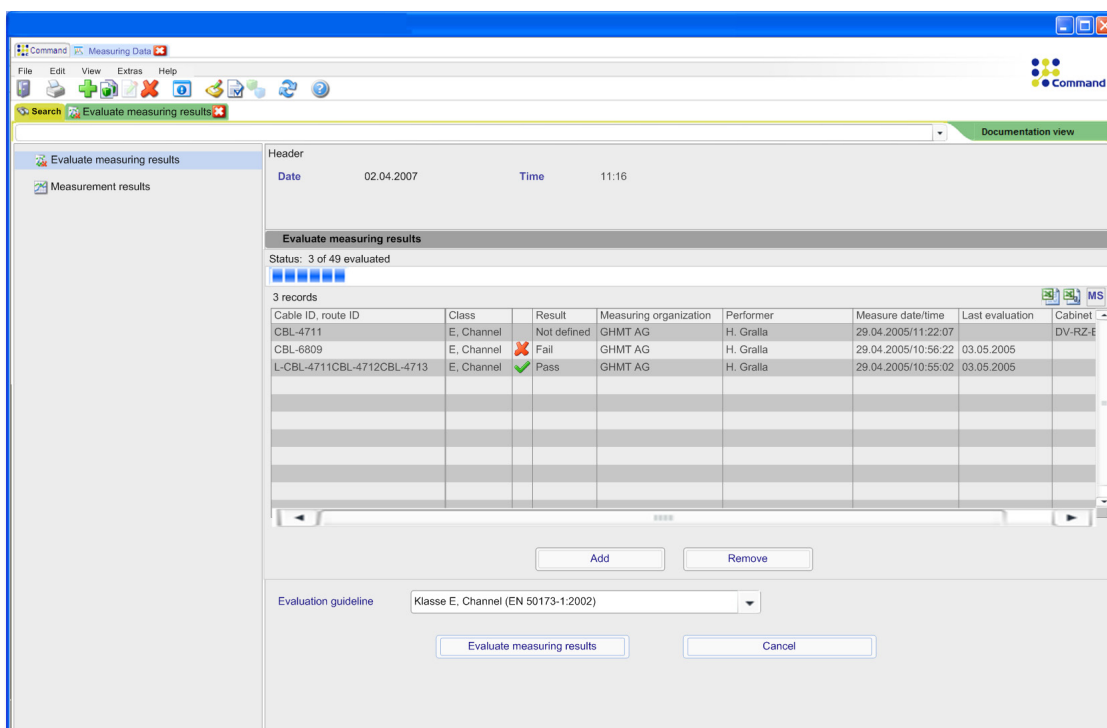
// Measuring Data

Measuring Data fetches the measurement files for measurements of the structured copper wiring and assigns them to a cable or a cable route (connection consisting of several cables) in the database.

tance measurements

→ Graphical evaluation of limit values

→ Direct access to measurement results in the database



// Calculations of cable routes

All measurement results are stored in the Command database and can be used for the manual or automated calculation of cable routes (autorouting) in the copper network.

// Evaluation of the measurements

Evaluation of the measurements: As standard, the following normative specified evaluation guidelines are stored in Measuring Data:

Normative specified limit values are used for the evaluation of the acceptance measurements. The user can also define individual limit values and evaluation guidelines for evaluating the acceptance measurements.

The Measuring Data interface contains the following functions:

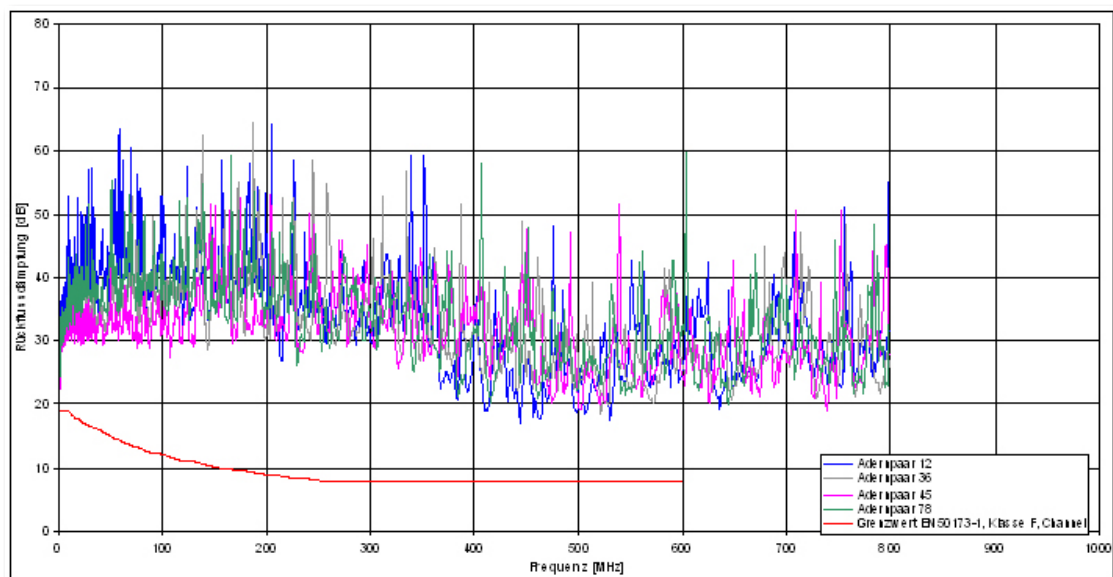
- Fetch and manage measurement files for field measuring devices
- Evaluate the acceptance measurements using normative specified limit values
- Create individual evaluation guidelines for evaluating the accep-

- Class D, channel (EN 50173-1:2002)
- Class D, permanent link (EN 50173-1:2002)
- Class E, channel (EN 50173-1:2002)
- Class E, permanent link (EN 50173-1:2002)
- Class F, channel (EN 50173-1:2002)
- Class F, permanent link (EN 50173-1:2002)

The aim of the evaluation is to test the cable or the cable route for its network-technical suitability.

// Graphical representation

In graphical form, the measurement results of the acceptance measurement of a cable or a cable route are displayed together with the limit values.



// Individual limit values

In addition to the evaluation of measured data compared with normative specified guidelines, Measuring Data allows the definition of individual limit values and evaluation guidelines.

// System requirements

The use of Measuring Data requires C base and C line.