

// PRODUCT SHEET

Network Management Interface



- Connections to the active network management
- Query the status and SNMP information
- Connection using key terms
- Bidirectional call
- Detection of documentation gaps

// Network Management Interface

An optimum addition of the collected data occurs in the interface between Command and a Network Management System. Whereas the physical conditions take priority in Command:

- Where is the device located?
- How it is wired?

The network management concerns the logical network configuration and the data that currently exists in the network. A key term is used to connect the elements of both products.

- IP address
- IP name

The interface allows the alternate calling of the software products.

// Bidirectional call

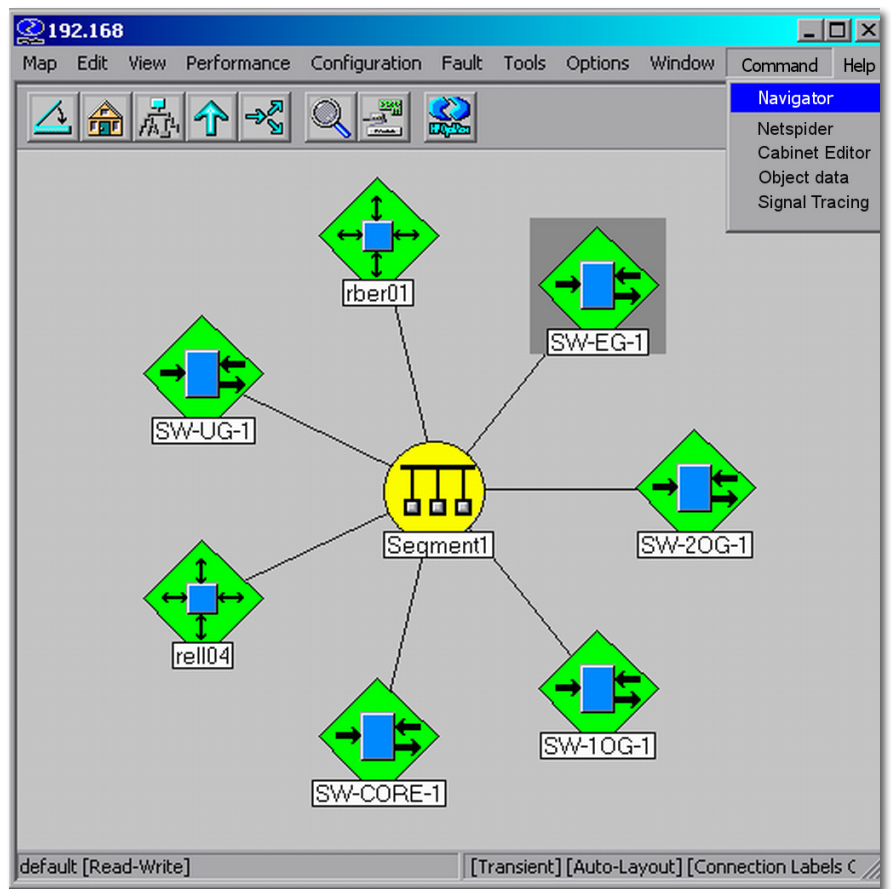
Selects a network node in the Network Management Interface and transfers it to Command. A software client will be started and the selected nodes displayed. The following information can be fetched immediately:

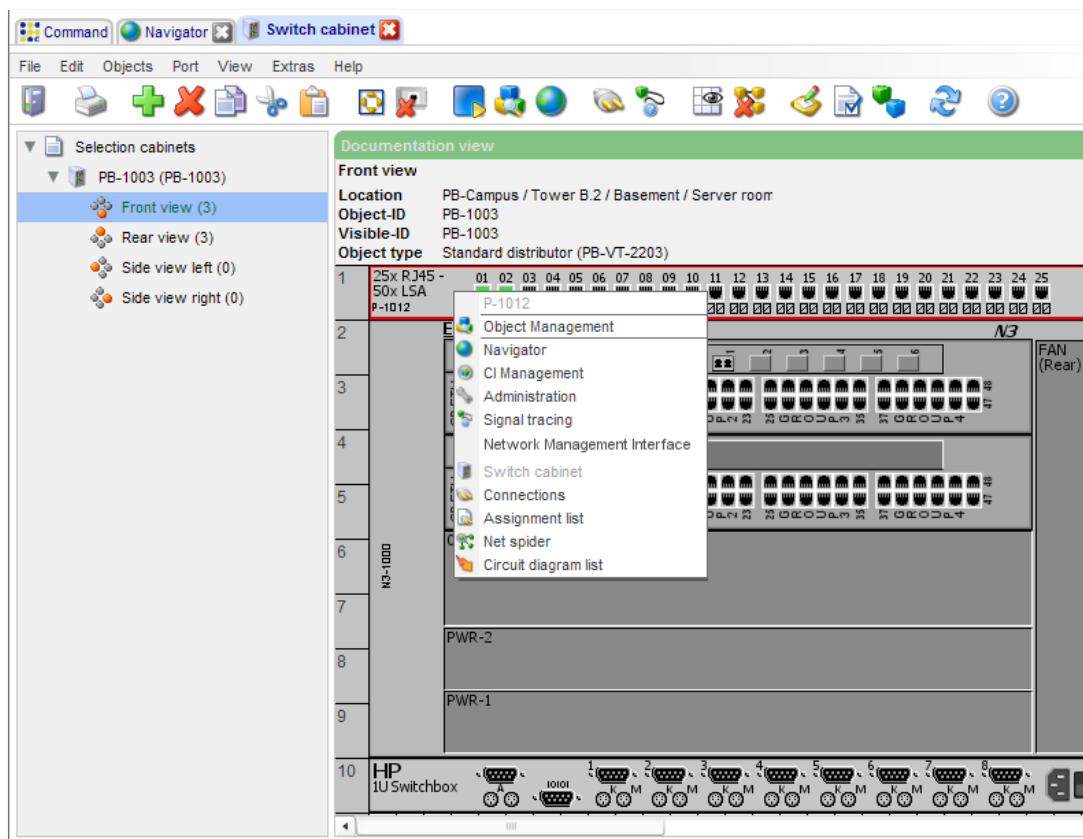
- Where is the node located (campus, building, floor, room)?
- How it is installed (cabinet, chassis)?
- Display of all database information (master data and configuration data, history, ...)
- List of all objects connected to the node

The interface so supplies important information for the Network Management user.

In the reverse case, the interface is able to query current network data, such as the status, for an object in Command or jump to the correct view of the Network Management.

Data fetched from the Network Management can be displayed directly in Command masks.





// System requirements

The interface is currently available for the following products:

- HP OpenView Network Node Manager
- theGuard!
- Cisco Works
- Netview 6000
- Unicenter NSM
- Spectrum
- Netcool

The interface is independent of the operating system of the Network Management Interface.