

// PRODUCT SHEET

Server Management



- Server
- OS environment
- CI environment
- Distributed systems
- Storages
- Software and applications

// Server-infrastructure

The Server Management Command module can be used to describe all aspects of a modern server infrastructure. In addition to server systems, the storage systems and the distributed systems can be considered in order to produce an integral documentation.

The management of software, contracts, persons and logbook entries is also fully integrated in the Server Management. Physical, logical and virtual servers are not considered as individual components but with regard to the associated context.

// Server

The Server Management differentiates between servers and virtual servers. Servers based on server hardware can be placed in the Navigator, be equipped with a network card and patched to the network. These servers are assigned components, such as hard disks, RAM modules, processors or plug-in cards.

An automatic summation (e.g. hard disk capacity, total RAM) is performed for the components. Only one search window, with which both servers and virtual servers can be specified, is used in the search for servers.

// Virtual servers

Virtual servers are managed completely in the Server Management. They use only virtual hardware resources, namely hardware resources

made available by the server that the virtual server provides. Not only the updating of the attributes of both server types, but also the assignment of software, contracts and persons, is made in the Server Management.

// OS environment

Each of the two mentioned server types consists of a server object (virtual or physical) and an associated OS environment (logical server). The OS environment permits the installation of an operating system, the assignment of an IP configuration and the installation of software on a server.

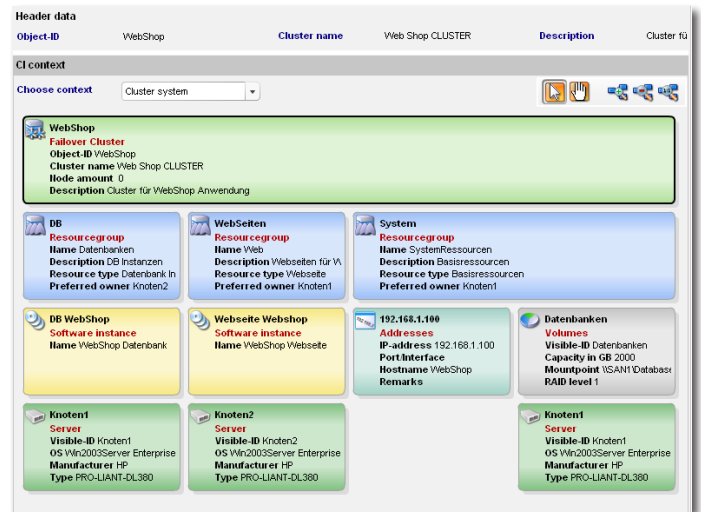
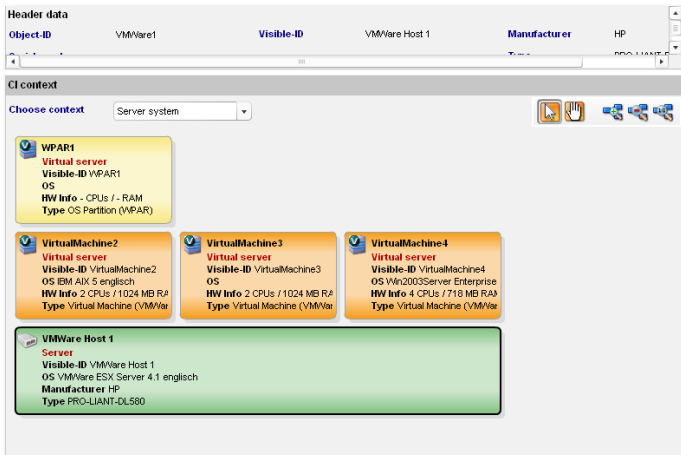
To improve clarity, when a server is displayed in the Server Manage-

Result - Server								
40 records								
	Object-ID	Visible-ID	Manufacturer	Type	Serial number	Inventory number	Location	Campus
	SVRT-1011	SVRT-1011		Virtual Machine				
	SVRT-1012	SVRT-1012		Virtual Machine				
	SVRT-1013	SVRT-1013		Virtual Machine				
	SVRT-1016	SVRT-1016		Virtual Machine				
	V210-1000	V210-1000	Sun	FIRE-V210			Zone	Ellwangen
	V210-1001	V210-1001	Sun	FIRE-V210			Zone	Ellwangen
	V440-1001	V440-1001	Sun	FIRE-V440			Zone	Ellwangen
	VMWare1	VMWare Host 1	HP	PRO-LIANT-DLS80			Zone	Ellwangen

ment, information about the server and information about its OS environment are shown together.

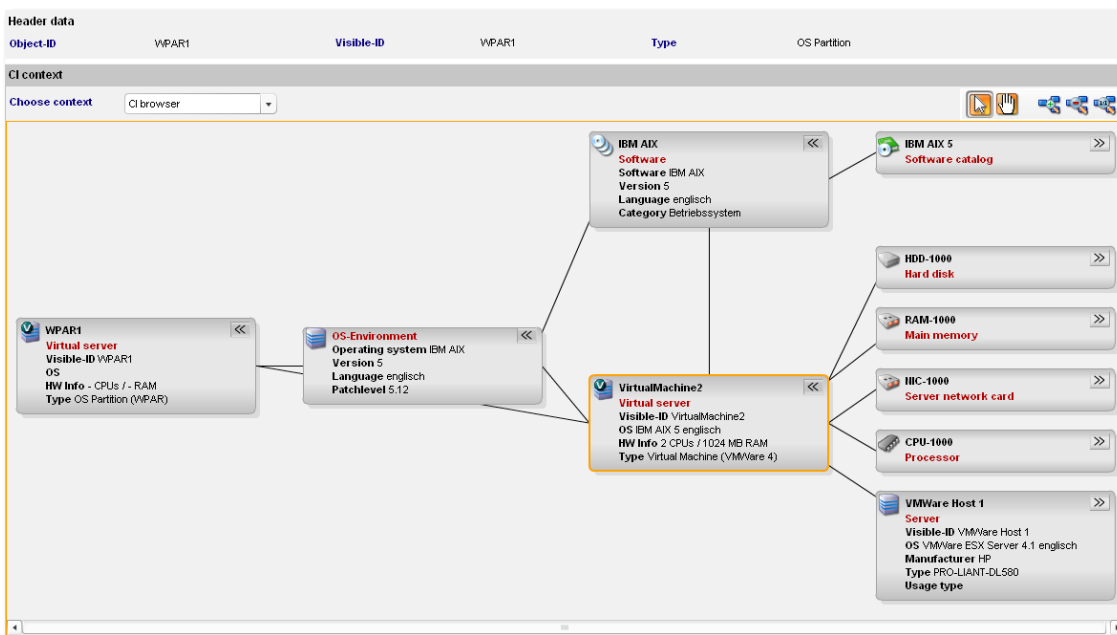
// CI environment (CI = configuration item)

The „Server system“ CI environment function allows servers and virtual servers, including their dependencies, to be displayed graphically. This provides a fast overview of a server and the virtual servers provided on the basis of this server.



The „CI Browser“ function in the CI environment permits the graphical representation of a CI and provides the capability to determine all dependencies when the required CIs and any linked CIs are opened.

the Navigator and connected with the network using an installed network card. All extended Command functions, such as Signal trace, are available for physical storages. Logical storages are managed



completely in the Server Management and can be assigned to the appropriate physical storages.

// Software and applications

The Server Management contains an easy-to-use software management. The software management function base forms a software catalog that contains entries for all relevant software products. The contained software products can then be assigned to the servers.

// Distributed systems

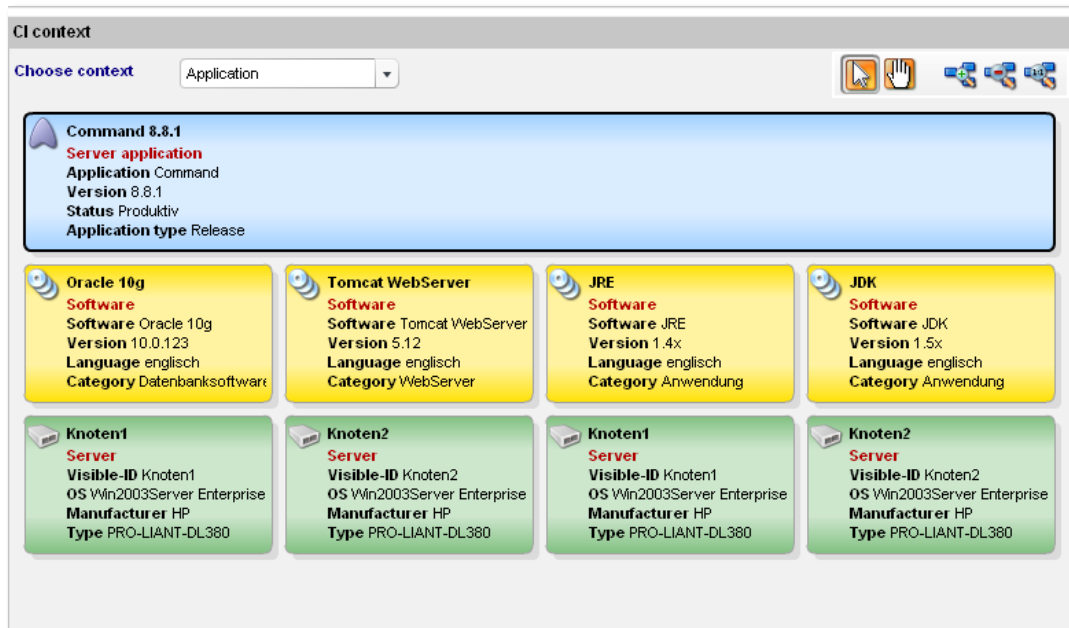
The documentation of distributed systems, namely systems that involve several server systems, is integrated in the Server Management. Failover clusters and server farms can be documented. To improve clarity, both failover clusters and server farms have their own CI context.

// Storages

The documentation of storages differentiates between physical and logical storages. Similar to servers, physical storages can be placed in

Several software instances for a software product can be created and managed on the servers. One or more software licenses can be created for the software products of the software catalog. To provide an overview of the application of the software licenses, these license entries can then be assigned to the installed software products on the servers.

Several software products can be combined to form an application; this permits a better understanding of the relationships between the individual components.



// History and file extensions

All objects can be assigned file extensions. A history for attributes, links and location information is also available.

// System requirements

The use of the Server Management requires the C base Command base package.

// Contract management, persons and organizations

Organizational information can be linked with the components in the Server Management. This allows the user to quickly receive an overview of the responsibilities and existing contracts with hardware and software manufacturers.

// Logbook entries

An integrated interface for the Lifecycle Management Command module integrates failures, activities and changes of the associated CI in the Server Management. This function provides a specific overview of all important activities associated with the selected CI.

// Search and query functions

Comprehensive search and query capabilities are provided. Data records in the individual management areas can not only be found using an individual filter or search criteria, but also exported to Microsoft Excel and in PDF format.